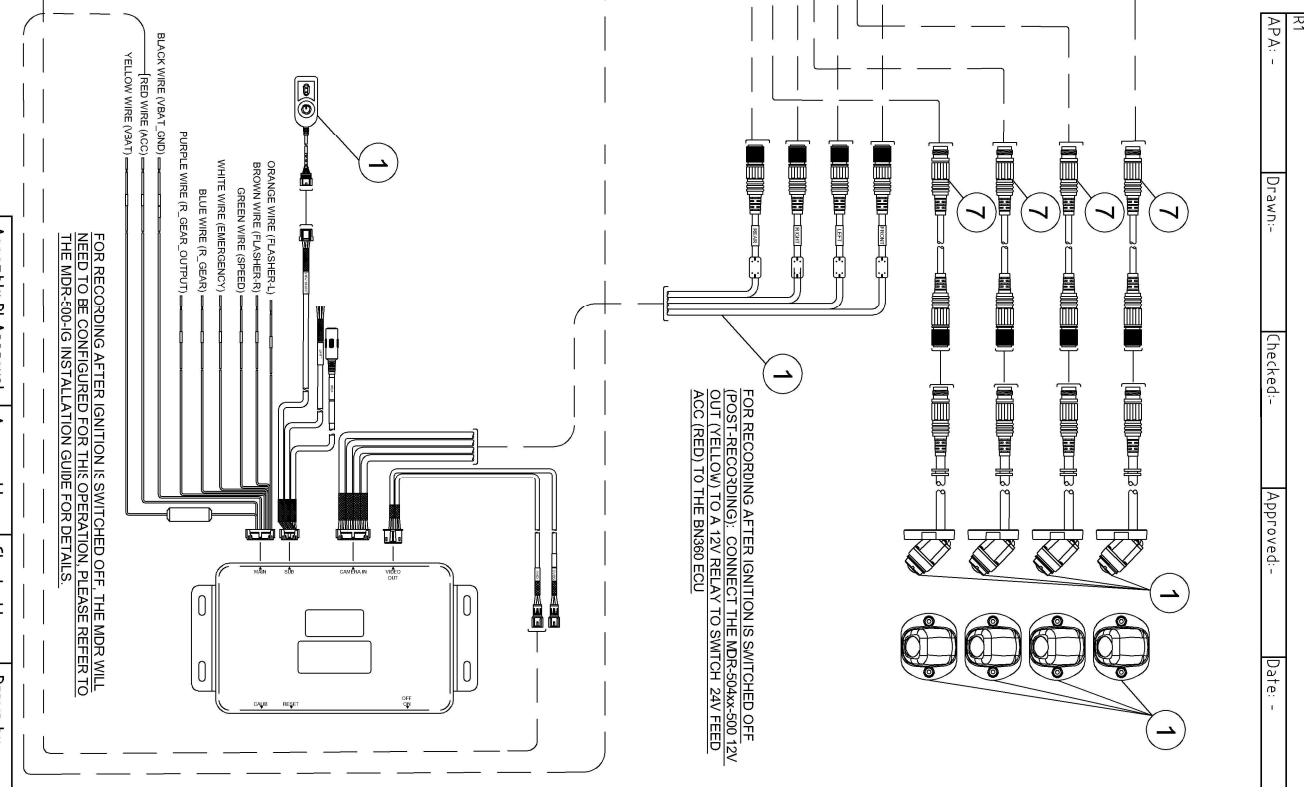
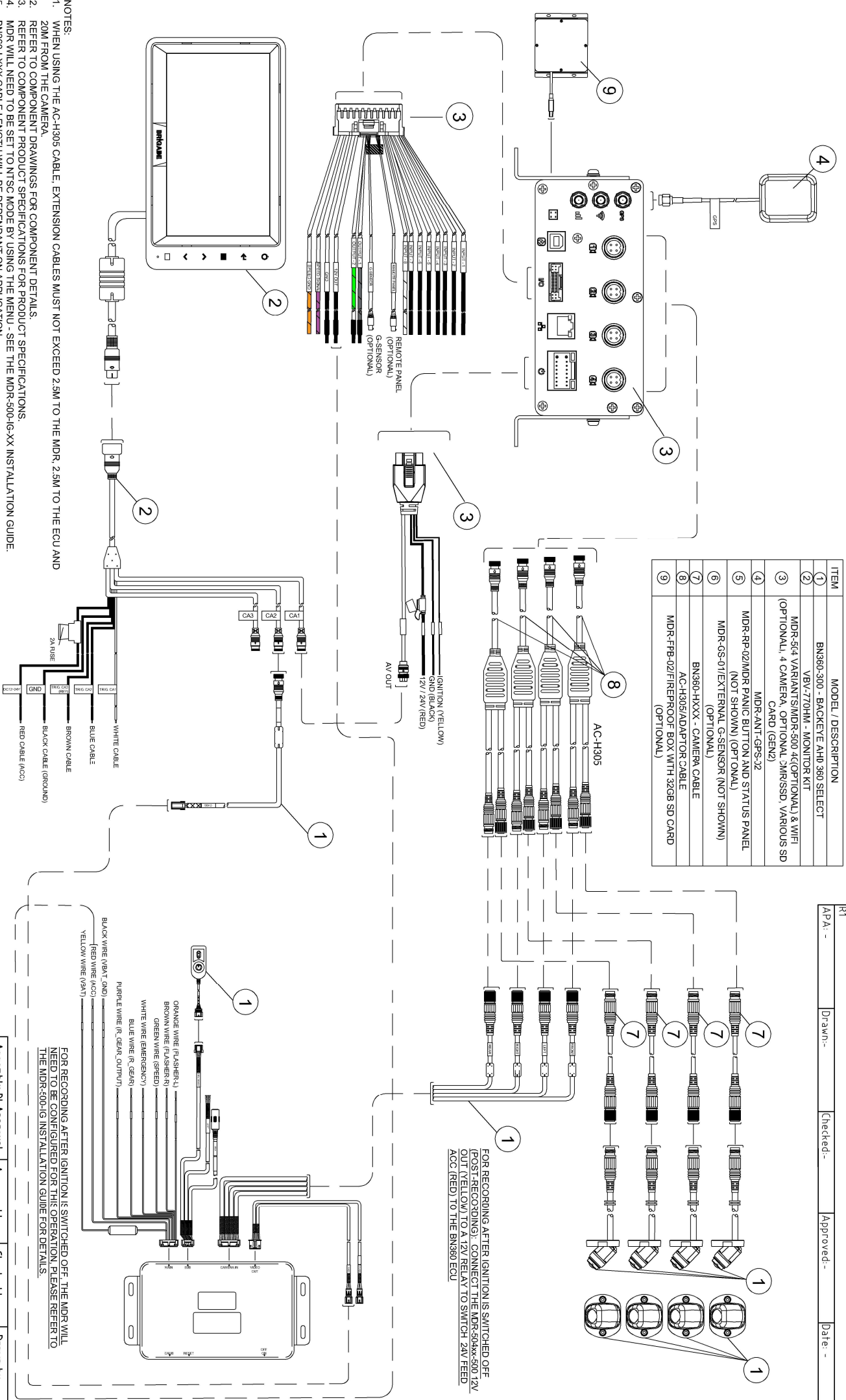


ITEM	MODEL / DESCRIPTION
1	BN360-300 - BACKKEYE AHD 360 SELECT
2	VBV-770HM - MONITOR KIT
3	MDR-514 VARIANT/MDR-500 4Q(OPTIONAL) & WIFI (OPTIONAL), 4 CAMERA, OPTIONAL 2M/RSSD, VARIOUS SD CARD (GEN2)
4	MDR-ANT-GPS-32
5	MDR-RR-02/MDR PANIC BUTTON AND STATUS PANEL (NOT SHOWN) (OPTIONAL)
6	MDR-GS-01/EXTERNAL G-SENSOR (NOT SHOWN) (OPTIONAL)
7	BN360-HXXX - CAMERA CABLE
8	AC-H305/ADAPTOR CABLE
9	MDR-FRP-02/FIREPROOF BOX WITH 32GB SD CARD (OPTIONAL)



FOR RECORDING AFTER IGNITION IS SWITCHED OFF THE MDR WILL NEED TO BE CONFIGURED FOR THIS OPERATION PLEASE REFER TO THE MDR-500/IG INSTALLATION GUIDE FOR DETAILS.

FOR RECORDING AFTER IGNITION IS SWITCHED OFF (POST RECORDING) CONNECT THE MDR-500/XX-500/12V OUT (YELLOW) TO A 12V RELAY TO SWITCH 24V FEED ACC (RED) TO THE BN360 ECU

- NOTES:
1. WHEN USING THE AC-H305 CABLE, EXTENSION CABLES MUST NOT EXCEED 2.5M TO THE MDR, 2.5M TO THE ECU AND 20M FROM THE CAMERA.
 2. REFER TO COMPONENT DRAWINGS FOR COMPONENT DETAILS.
 3. REFER TO COMPONENT PRODUCT SPECIFICATIONS FOR PRODUCT SPECIFICATIONS.
 4. MDR WILL NEED TO BE SET TO NTSC MODE BY USING THE MENU - SEE THE MDR-500/IG-XX INSTALLATION GUIDE.
 5. BN360-LXXX CABLE LENGTH WILL BE DEPENDANT ON APPLICATION.
 6. VBV-LXXX CABLE LENGTH TO BE SET TO MONITOR DEPENDING ON APPLICATION.
 7. REFER TO MDR-500/IG-XX INSTALLATION GUIDE AND BN360 INSTALLATION GUIDE FOR INSTALLATION, CALIBRATION & CONFIGURATION OF THE SYSTEM.
 8. TRIGGER CONNECTIONS DEPENDENT ON APPLICATION.

PROPRIETARY NOTICE
 THIS DESIGN AND TECHNICAL INFORMATION APPEARING ON THIS DRAWING IS THE PROPERTY OF BRIGADE ELECTRONICS, AND IS DISCLOSED IN CONFIDENCE. IT IS NOT TO BE COPIED, REPRODUCED, REVEALED TO OR EXPLOITED BY OTHERS, EITHER IN WHOLE OR IN PART WITHOUT THE EXPRESS WRITTEN CONSENT OF BRIGADE ELECTRONICS.

BRIGADE
 www.brigade-electronics.com

Angle of Projection	Third Angle
Assembly Pl Approval	N/A
Approved by	A. KEBEDE
Checked by	S. GOVENDER
Units	mm
Scale	N/A
Released	19/11/2021
Status	RELEASED
Part No	BE-004634-00-21
SELECT AHD 360 WITH MDR-504	